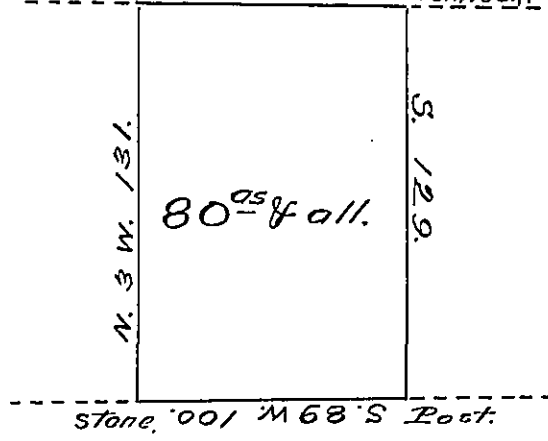


Old state line. P. East 106 Hemlock.



Donation lot No 1999.

A draught of a part of a Tract of Land situate in Amity Tp. Erie Co. Surveyed for Amos Williams 25^t Oct 1833 by virtue of the actual settlement residence & improvement of James Leyland. Containing Eighty acres & allowance

Cyrenus E. Webster

D. S.

I Certify that the above is a true copy of a Survey taken from the survey book of Erie Co. in my possession.

Witness my hand at Waterford this 21st day of October 1864.

Wm. Benson

County Surveyor.

IN TESTIMONY that the above is a copy of the original remaining on file in the Department of Internal Affairs of Pennsylvania, made conformably to an Act of Assembly approved the 16th day of February, 1833, I have hereunto set my Hand and caused the Seal of said Department to be affixed at Harrisburg, this Twenty fourth day of June 1907.

Henry Howell
Secretary of Internal Affairs.